



- , (- , (0 , & 5 2 (/ (& 7 5 2 1 , & 6 & 2

1 1 - 2 & - 2 & 6 H U L H V

0 E L W V + L J K 6 S H H G 7 U D Q V L V W F

' H V F U L S W L R Q

7 K H 1 1 - 2 & ; V H U E R P E I D Q H
\$ O * D \$ Q I U D P H W G L R Q M K H P L W W H U
Z K L E R S W L F B X S W B G L O K F R V S H H G
S K R W B D Q V D S O B U , V L S F D F N Z J M K
G L I I H O H D P U P R S W L R Q V
\$ V H S D G D W H E J Q Z B K R W R O Q R G H
W U D Q V I H G X W H E V H F R O D S I B W L R W D Q F H
R W K L Q S X M D Q Z K V W R S U R V K A B H G
E I V H Y H R U D G R P D J Q L W R X G F B Q Y H Q W L
S K

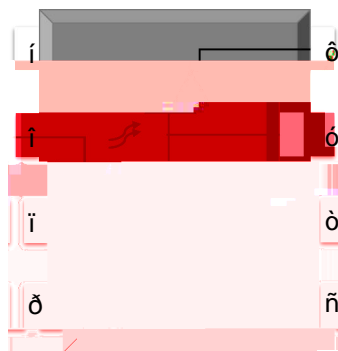
D W X U H V

z + L J K V R O D W L 9 5 Q 6
z ' & L Q S Z L W W K U D Q V L V W R U R X W S X W
z 2 S H U D W H Q S H U D D X J H J & W R
f &
z 5 (\$ & + F R P S O L D Q F H
z + D O R J U H Q B S W L R Q D O
z 0 6 / F O D V V
z 5 H J X O D S B B U R Y D O V
" 8 /
" 9 '(

\$ S S O L F D W L R Q V

x / L Q H U H F H L Y H U V
x 7 H O H F R P P X Q L F D W L R Q H T X L
x 2 X W L Q W H U I D F H W R & 0 2 6 / 6
x : L G H E D Q G Z L G W K D Q D O R J F
x 3 X O V H W U D Q V I R U P H U U H S O
x & R P S X W H U S H U L S K H U D O L C

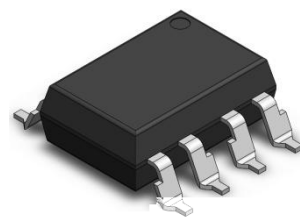
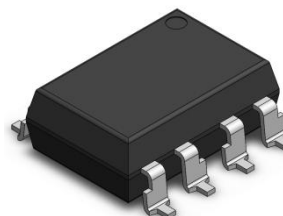
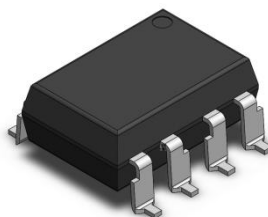
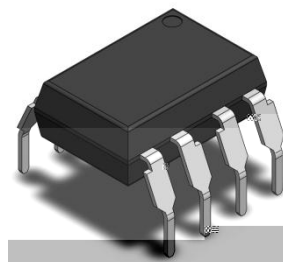
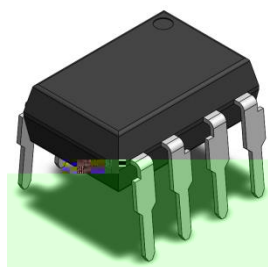
6 & + (0 \$ 7 , &



3 , 1 ' () , 1 , 7 , 2 1

1 & 9 & &
\$ Q R G I 9 % I R U 1 1
1 & I R - 0 & - 2 &
& D W K 9 2
1 & * 1'

2 8 7 / , 1 (



\$%62/87(0\$;,0805\$7,1*6				
3\$5\$0(7(5	6<0%2/	9\$/8(81,7	1RW
,1387				
)RUZDUG &XUUHQW)		P\$	
3HDN)RUZDUG &XUUHQW)3		P\$	
3HDN 7UDQVLHQW &XUHQW) WUDQV		\$	
5HYHUVH 9ROWDJH	9 ₅		9	
,QSW 3RZHU 'LVVLS	3,		P:	
287387				
6XSSO\ 9ROWDJH	9&&	a	9	
2XWSXW 9ROWDJH	9 ₂	a	9	
2XWSXW &XUUHQW	2		P\$	
(PLWWHU %DVH 5HYHUVH	9(%5		9	
%DVH &XUUHQW	,%		P\$	
2XWSXW 3RZHU 'LVVLS	3 ₂		P:	
&20021				
7RWDO 3RZHU 'LVVLS	3WRW		P:	
,VRODWLRQ 9ROWDJH	9LVR		9UP\	
2SHUDWLQJ 7HPSHUDWLRQ	7RSU	a	f&	
6WRUDJH 7HPSHUDWLRQ	7VWJ	a	f&	
6ROGHULQJ 7HPSHUDWLRQ	7VRO		f&	

Note 1. 50% duty, 1ms P.W

Note 2. 1µs P.W, 300pps

Note 3. AC For 1 Minute, R.H. = 40 ~ 60%

Note 4. For 10seconds

1 1 -2& -2& 6HULHV

0ELW V +LJK 6SHHG 7UDQVLVWR

OB·P

(/(&75, &\$ / 237, &\$ / &+\$5\$&7(5, 67, &6

3\$5\$0(7(5 6<0%2 0,1

6R

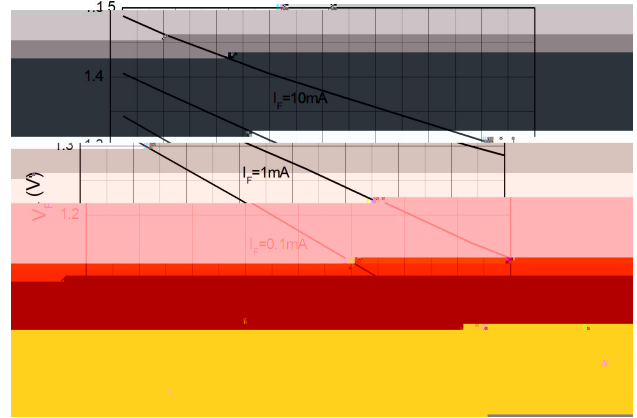
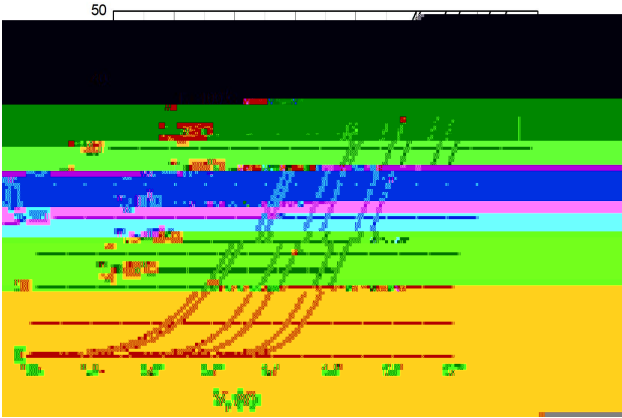
7(/Æ

6 < 6 < & % , 5 5 , <
 K W W S Z Z Z M M Z G

&+\$5\$&7(5,67,& &859(6

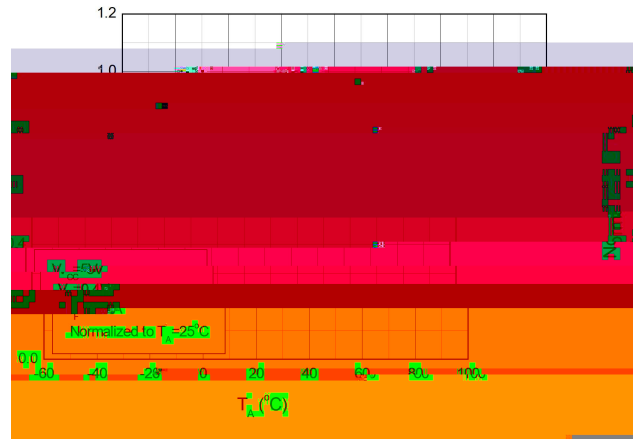
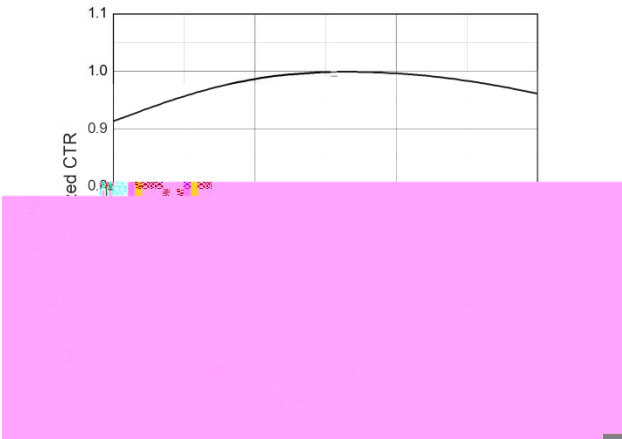
)LJ)RUZDUG &XUUHG
YV)RUZDUG 9ROWDJ

)LJ)RUZDUG 9ROWDJ
YV \$PELHQW 7HPSHUD'



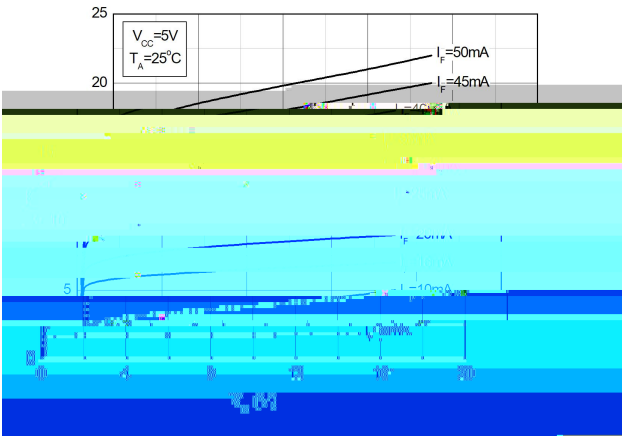
)LJ ,QSXW 7KUHVKROG
YV \$PELHQW 7HPSHUD'

)LJ ,QSXW 7KUHVKROG
YV \$PELHQW 7HPSHUD'



)LJ /RZ /HYHO 2XWSXW 8
YV \$PELHQW 7HPSHUD'

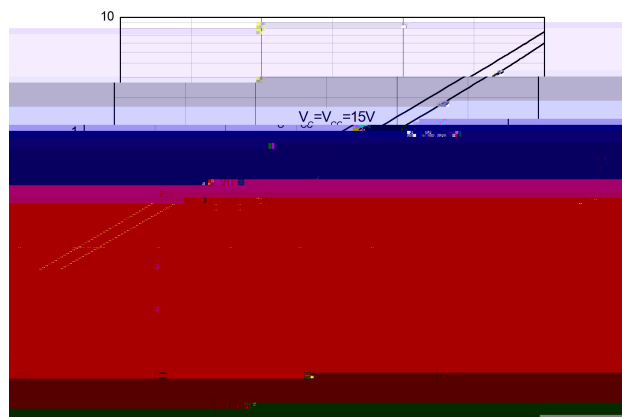
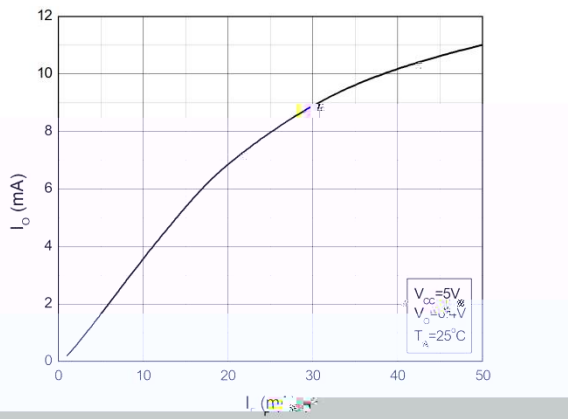
)LJ /RZ /HYHO 2XWSXW 8
YV \$PELHQW 7HPSHUD'



&+\$5\$&7(5,67,& &859(6

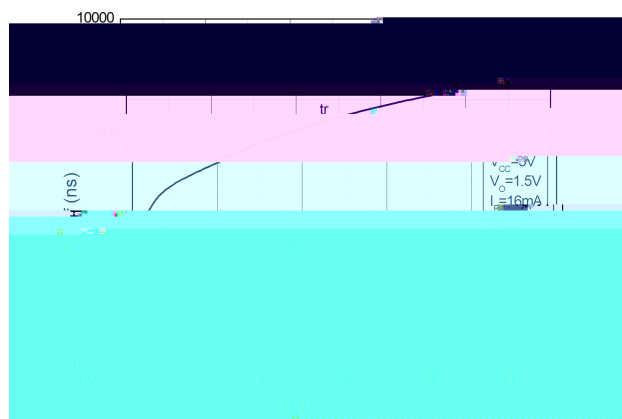
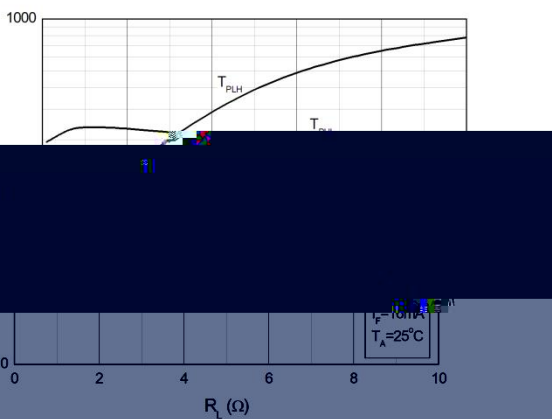
)LJ /RZ /HYHO 2XWSXW 9
 YV \$PELHQW 7HP SHUD

)LJ /RZ /HYHO 2XWSXW 9
 YV \$PELHQW 7HP SHUD



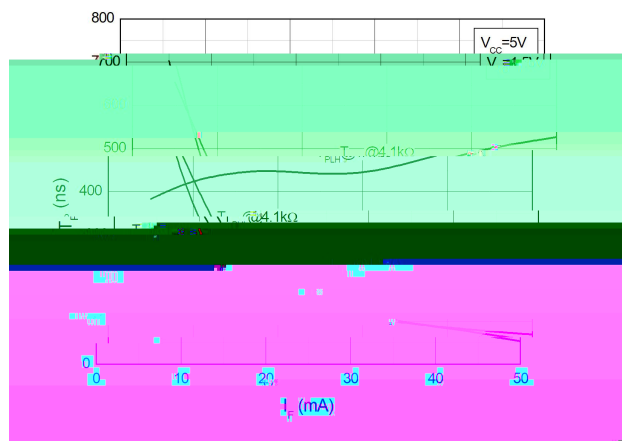
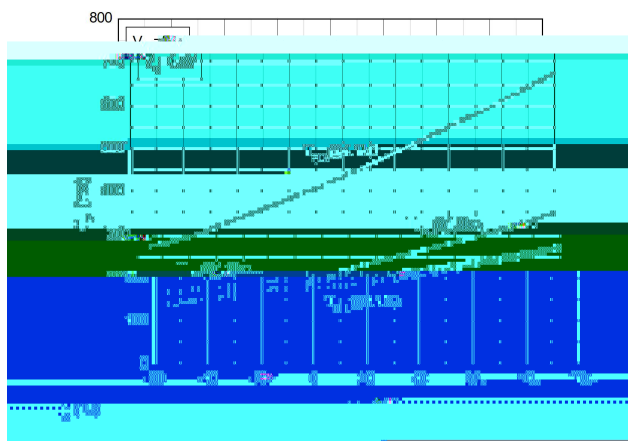
)LJ +LJK /HYHO 2XWSXW
 YV \$PELHQW 7HP SHUD

)LJ +LJK /HYHO 2XWSXW
 YV \$PELHQW 7HP SHUD



)LJ 2XWSXW 9ROWD,
 YV)RUZDUG &XUUHQ

)LJ 2XWSXW 9ROWD,
 YV)RUZDUG &XUUHQ

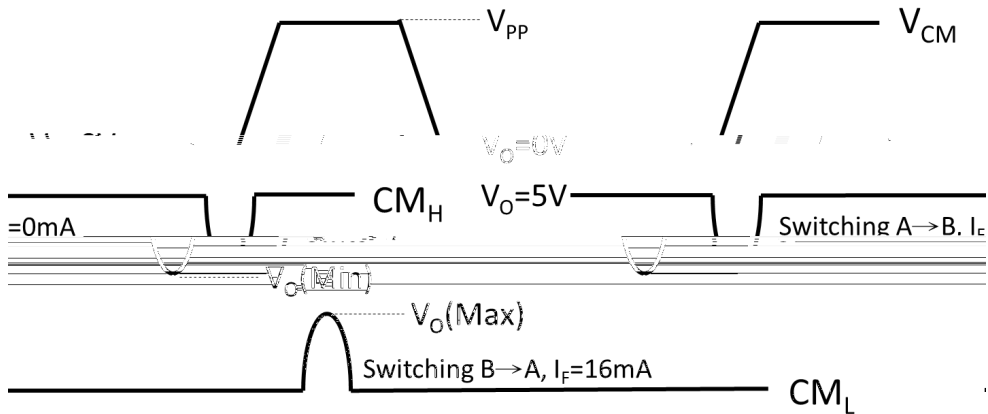


7 (67 & ,5&8,76

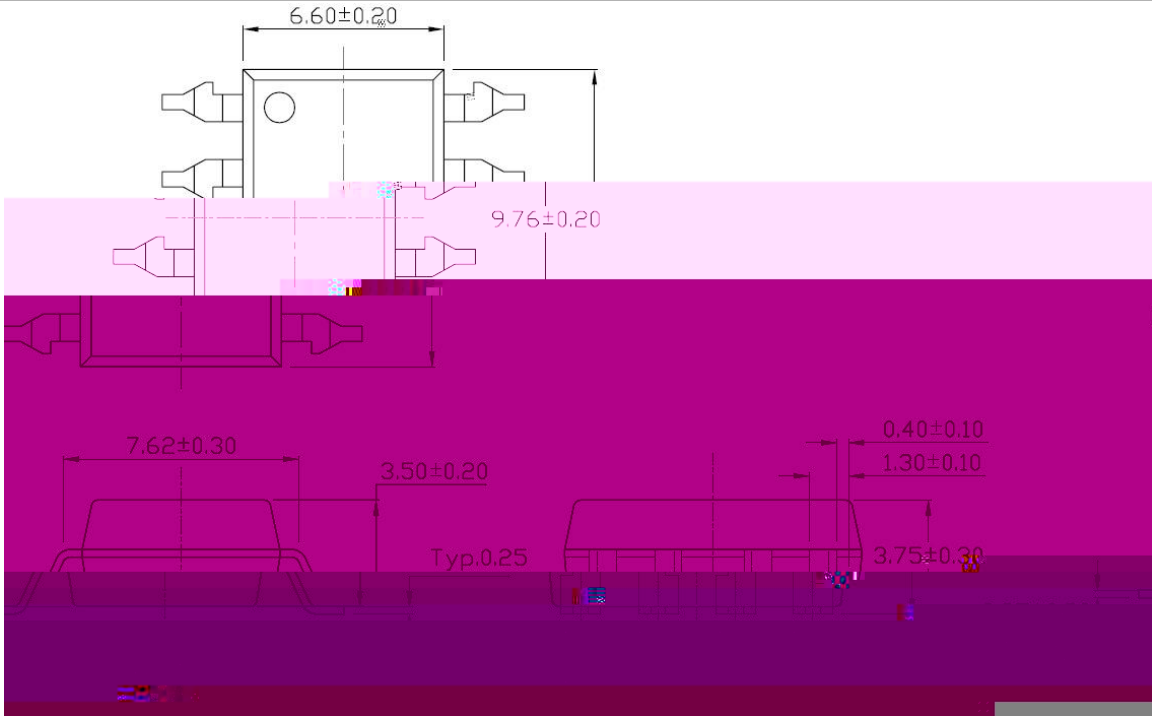
)LJ 7HVW &LUFXLWV IRU &RPPRQ 0RGH 7UDQVLVWR



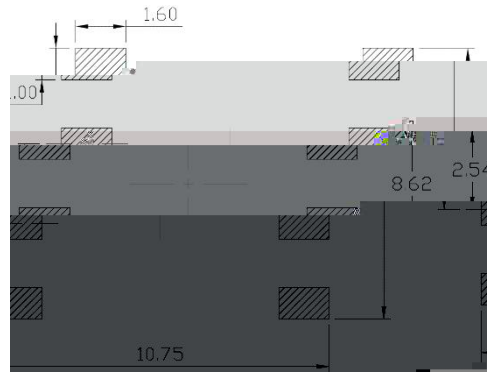
)LJ :DYHIRUPV RI &RPPRQ 0RGH 7UDQVLVWRHQW ,P



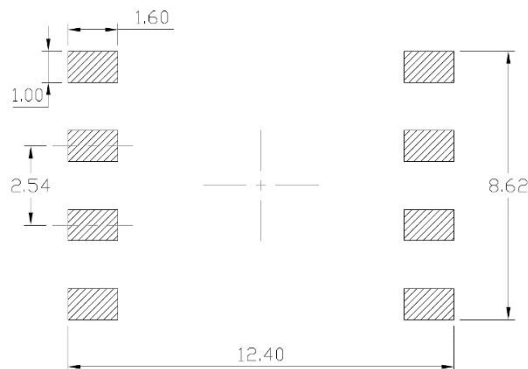
3\$&.\$*(',0(16,216 LPHQVLRQV LQ PP XQOHVV RWKHU
 6XUIDFH 0RXQW *XOOZLQJ /HDG)RUPLQJ 6/0



5HFRPPHQGHG 6RORGHV 0LRYM LQ PP XQOHVV RWKHU
 6XUIDFH 0RXQW /HDG)RUPLQJ 6XUIDFH 0RXQW /RZ 3



6XUIDFH 0RXQW *XOOZLQJ /HDG)RUPLQJ

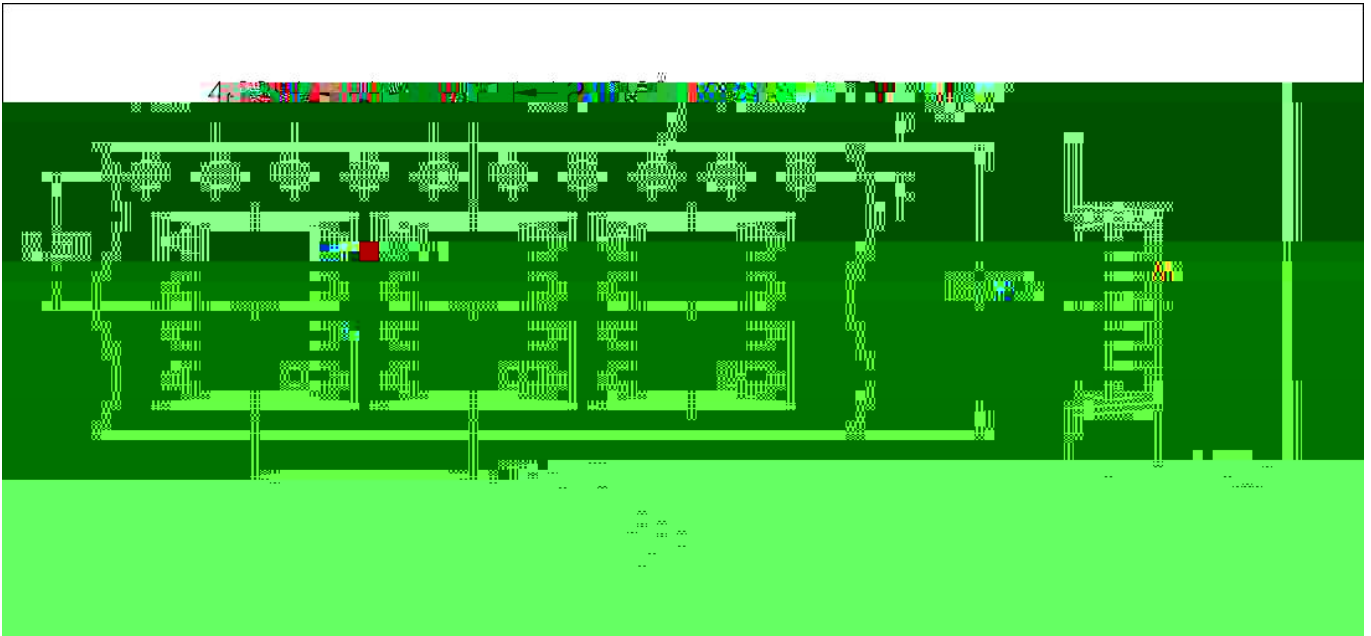


&DUULHU 7DSH 6SHHFLHOVFLRQV XQOHVV RWKHU

2SWLRQ 6 7 6 / 7

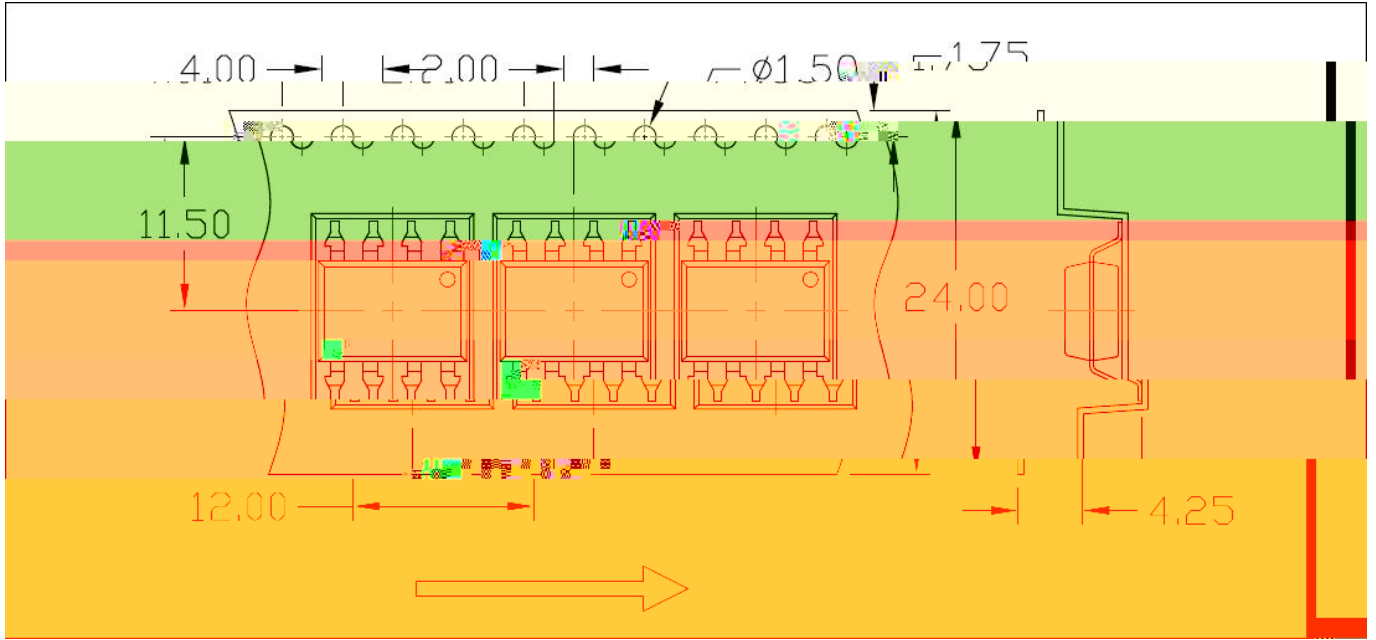


2SWLRQ 6 7 6 / 7

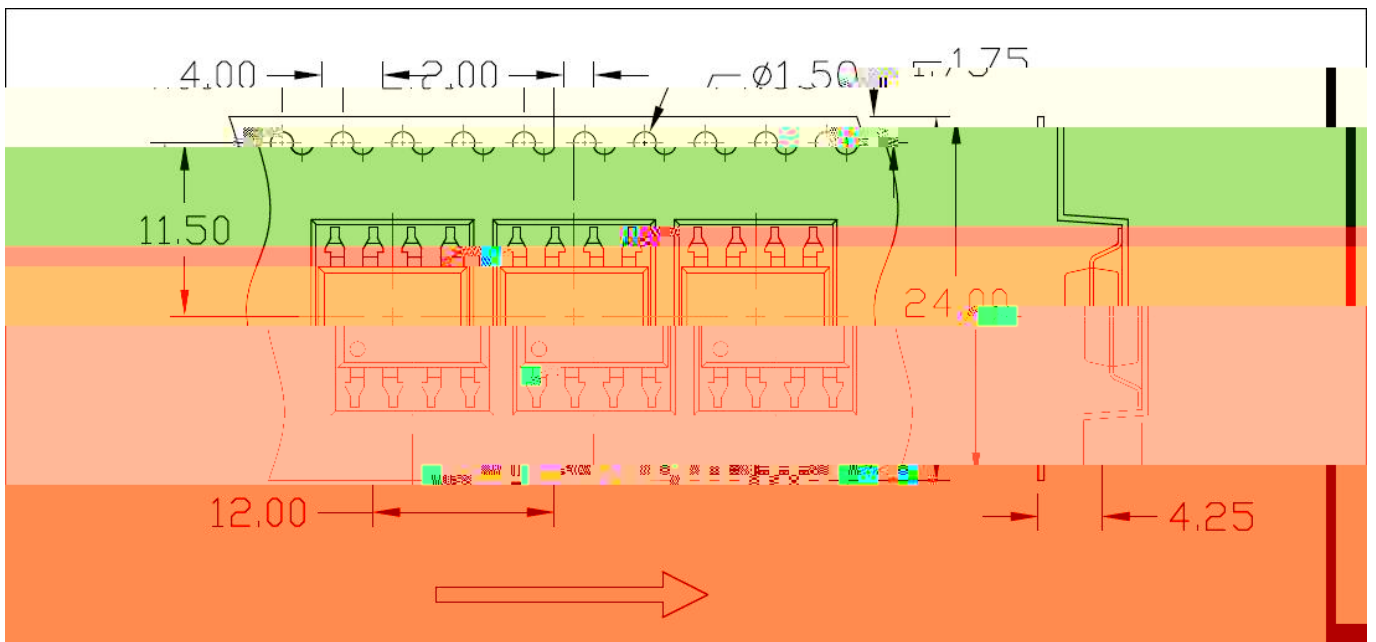


&DUULHU 7DSH 6SHFLHOFLBOMLRQV XQOHVV RWKHU

2 SWLRQ 6/0 7

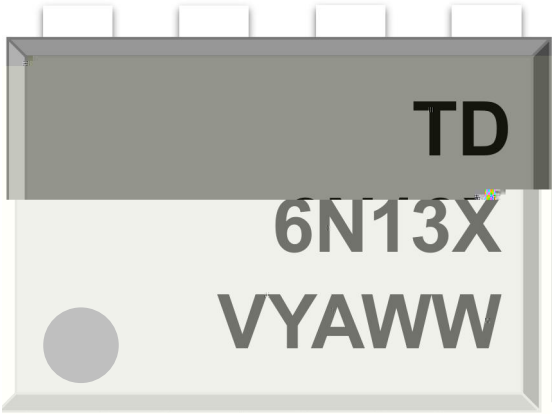


2 SWLRQ 6/0 7



25'(5,1*\$1'0\$5.,1*,1)250\$7,21

0\$5.,1*,1)250\$7,21



-2& &RPSDQ\ \$EEU
 1 ; 3DUW 1XPEHU
 9 9'(2SWLRQ
 <)LVFDO <HDU
 \$ 0DQXIDFWXULQJ &RGH
 :: :RUN :HHN

25'(5,1*,1)250\$7,21

/\$(/ , 1) 250\$7,21

1 ; < = * 9
 1 ; ± 3DUW 1XPEHU ; R
 < ± /HDG)RUP 2SWLRQ
 0 6 6/ 6/0 1RQH
 = ± 7DSH DQG 5HHO 2SWLRQ
 * ± 0DWHULDO 2SWLRQ
 * * UHHQ 1RQH 1RQ * UH
 9 ± 9'(2SWLRQ 9 RU 1RQH

捷捷微申 (深圳) 有限公司
 JIEJIEWEISHEN (SHENZHEN) CO., LTD.
 Part No.: XXXXXXXXXXXX Bin Code: X

 Lot: XXXXXXXXXXXX
 Date Code: XXXX
 QTY: XXX PCS

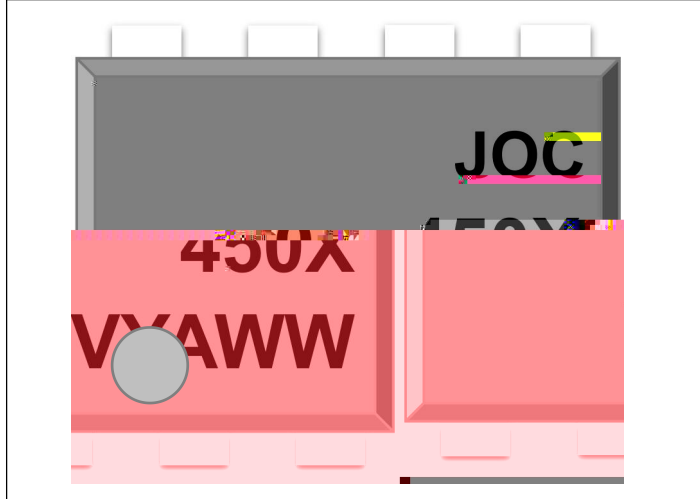



3\$&.,1* 48\$17,7<

2SWLR		
None		
M		
S(T1)		
S(T2)		
SL(T1)		
SL(T2)		

25'(5,1*\$1'0\$5.,1*,1)250\$7,21

0\$5.,1*,1)250\$7,21



-2& &RPSDQ\ \$EEU
 ; 3DUW 1XPEHU 5DQN
 9 9'(2SWLRQ
 <)LVFDO <HDU
 \$ 0DQXIDFWXULQJ &RGH
 :: :RUN :HHN

25'(5,1*,1)250\$7,21

/\$%(/,1)250\$7,21

-2& ; < = * 9
 -2&±&RPSDQ\ \$EEU
 ; ±5DQN RU
 < ±/HDURUPSWLRQ
 0 6 6/ 6/0 1RQH
 = ±7DSDHQSHH2\$SWLRQ7
 * ±0DWH2SLVDRQ
 * *UHHQRQH 1RQ *UHHQ
 9 ±9'(2SWLRQRQH

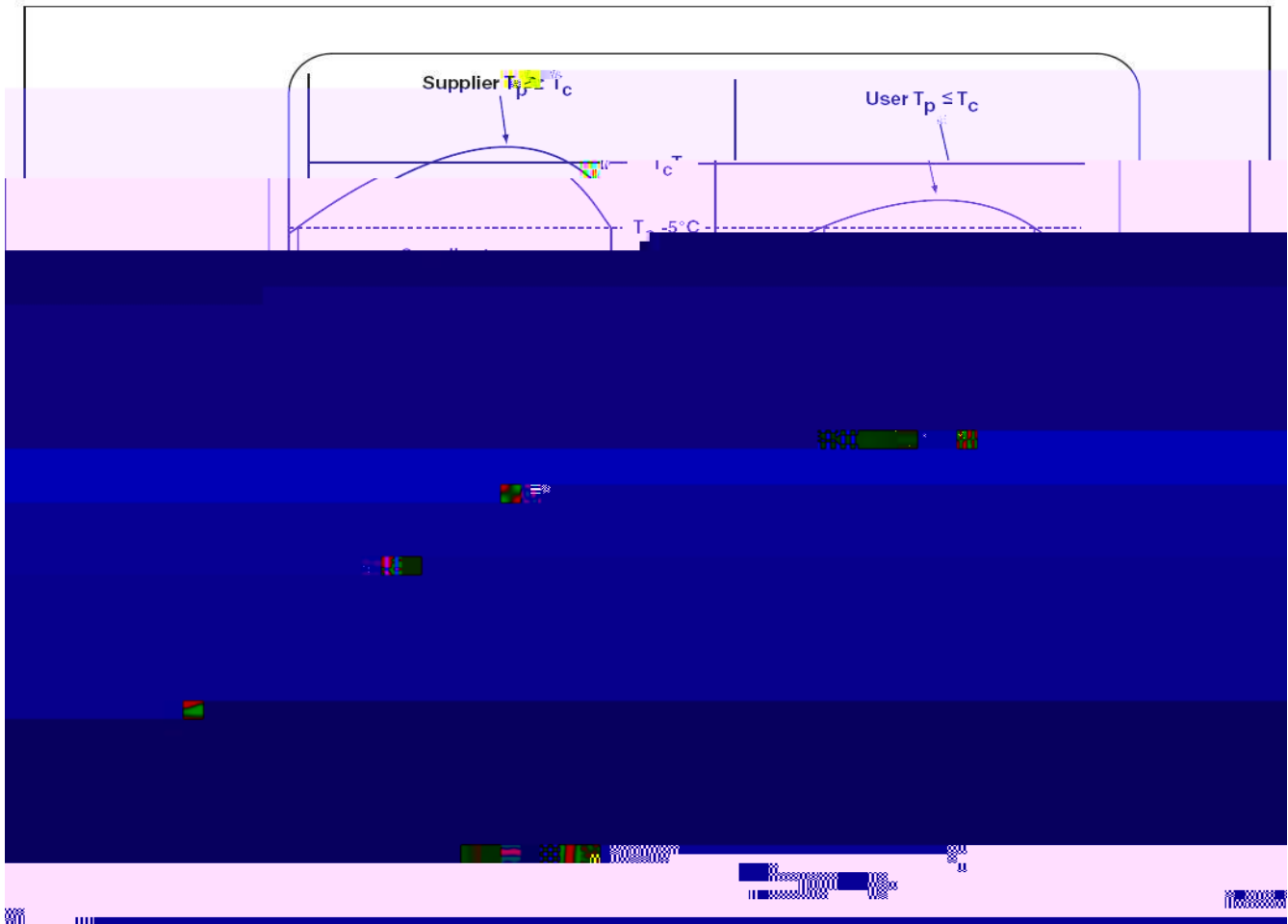
捷捷微电 (深圳) 有限公司
 JIEJIE MICROELECTRONICS (SHENZHEN) CO., LTD.
 Part No.: XXXXXXXXXXXX Bin Code: X

 Lot: XXXXXXXXXXXXXXXX
 Date Code: XXXX
 QTY: XXX PCS

Option	E i Ubh]hm	E i Ubh]hm Ë =bbYf VcI	E i Ubh]hm Ë C i hYf VcI
None	45Units/Tube	32 Tubes/Inner box	10 Inner box/Outer box = 14.4k Units
M	40 Units/Tube	30 Tubes/Inner box	10 Inner box/Outer box = 12k Units
S(T1)	1000 Units/Reel	3 Reels/Inner box	5 Inner box/Outer box = 15k Units
S(T2)	1000 Units/Reel	3 Reels/Inner box	5 Inner box/Outer box = 15k Units
SL(T1)	1000 Units/Reel	3 Reels/Inner box	5 Inner box/Outer box = 15k Units
SL(T2)	1000 Units/Reel	3 Reels/Inner box	5 Inner box/Outer box = 15k Units

5()/2: ,1)250\$7,21

5()/2: 352),/(



3URILOH)HDWX	6Q 3E \$VVHPEO\ 3	3E)UHH \$VVHPEO
7HPSHUDWXUH 0LQ		f &
7HPSHUDWXUH 0D[f &
7LPH WV IURP 7VPL	VHFRQGV	VHFRQGV
5DPS XS 5DWH W/	f & VHFRQG PD	f & VHFRQG PD
/LTXLGRXV 7HPSHU	f &	f &
7LPH W/ 0DLQWDLQ	± VHFRQG	± VHFRQG
3HDN %RG\ 3DFNDJH	f & f & f &	f & f & f &
7LPH W3 ZLWKLQ j	VHFRQGV	VHFRQGV
5DPS GRZQ 5DWH 7	f & VHFRQG PD	f & VHFRQG PD
7LPH f & WR 3HDN 7H	PLQXWHV PD	PLQXWHV PD

' , 6 & / \$, 0 (5

z -, (-, (L V R Q W L Q P X S L O P W K T X J D O L H V O L D I X Q F M W Q G H I V L - J Q , (U H V H W K Y H I J K W
 W R D N F K D Q Z H L W K I X X W Q R H W L F H V

z 7 K H K D U D F W F H U M W R L Z F W K G L W D V K U H H S U H V W Q S V S F O L I R U P Z K Q D H U C H R W
 J X D U D Q W H H G

z -, (-, (P D N Q V Z D U U D U G H S U H V H R Q V K D W I D Q W J H U V G K V K L W D R E M L S H U R G X F W V I R
 D Q S D U W I S F X U S R U M H F R Q W L S U X R G X R W Q S Q R G X R W K P D [L P X H W H Q W
 S H U P L E W D S S O L E D Z , Q H , (G L V F O D D R Q D Q B O O D E L U L L W X R W K H D S S B U F D W L
 X V R D Q S U R G X E F W Q D Q B O O O L D E O O Z G M W K O R L P W W I S W E F D Q V H T X H Q W L D O
 L Q F L G G D P M D U D Q G F D Q D Q B O O L Z S O U H D Q W E B X Z O L U Q D R W I L L W G H V V
 S D U W L F X O D U

z 7 K S U R G X K V Z O V K S X E O L F D U C H R Y Q J I R W K J H Q H X D I B I O H F W D S S O L L F D W L R Q
 V X F K R I I L D F X I W R P D H W K R Q P H R P V X Q L F G W Y R D X G L R Y I T X X S O H H Q W F W U L F D
 D S S O L F D Q M G R Q U X P S Q W S P M B R Q L Q I U L Q Q B F H R K D Q W D E L O L W \

z 7 K L S U R G L X F R W Q W H Q B H G H B P L O L V D U R D D W R P P M G Y L D O M V W D R Q L Q J
 O L I H V D S S O L F B W Q R W W H S S O L F Z K W E R Q H V I X Q X P D O M R I C H D W K
 Z I X U D @ @ A ? T L (D W R Q H] € € € X O D I H R S @

z 3 O H F R H Q W D F , W D O B M C R V S H P E S S O L F D H W K R I Q W
 B F W H D J W F O X R M A @

z , P P H U X G L E R T Q R O S E I V W Q R W P P P H Q G H G
 W H H Q Q S U R E H F J W L O L O L F D W L R Q V

z 3 D U D P H S U H R U N G P H Z O S P R E V M U D E C E / @ A p €