



JE

08

MIS

EA1 .0

DESCRIPTION:

800 MIS 1000

1000

6 0 -9 1000

9 .

With 1000 008

M1

1000 10

1000 10

10 10 1000

10 10

02 5V 6

10 1000

MAIN FEATURES

10

	I_{SM}	1	A
	T_j	125	
	P_o	250	W
	$P_{(a=125)}$	P -3.33	W /
	P_b	350	W
	V_B	350	V
	T_p	-55+00	
	T_g	-55+50	
	T_b	20 ⁸	

NOTE1 AC for 1minute, R.H.=40~60%

NOTE2 For 10 seconds

ELECTRICAL CHARACTERISTICS

Symbol		Symbol	Symbol	Min	Typ	Max	Unit
p	V_F	$I_F=10A$	-	1.2	1.4	V	
	I_R	$V_R=0$	-	-	1	A	
	C_h	$V, f=1$	-	10	-	p	

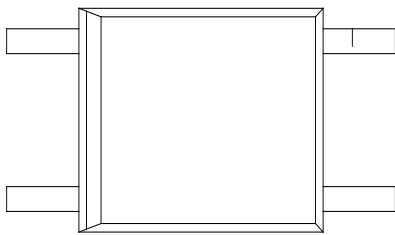
Z _θ - 9 6	I _{av}	V _H	I _F = 0	I _F	-	-	20	V
	L _g 6	I _{D 2}	I _F = 0	I _F	-	-	5	A
			V _θ = 0	V _θ				

NOTE3 Test voltage must be applied within dV/dt ratings.

NOTE4 Refer to Fig. 4 & Fig. 5

ORDERING AND MARKING INFORMATION

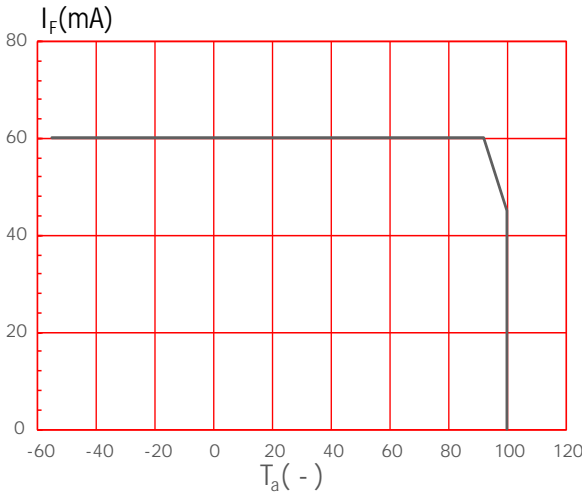
MARKING INFORMATION



Characteristics Curves

E1: ~~0 100 mA~~

E2: 0 ~~100 mA~~
100



FTM (mA)

Forward Current vs. Forward Volt.

TEST CIRCUITS

Fig 1 2:

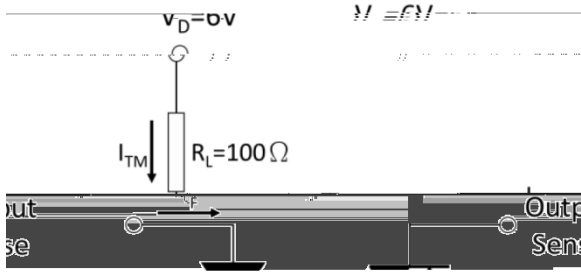


Fig 1 3:

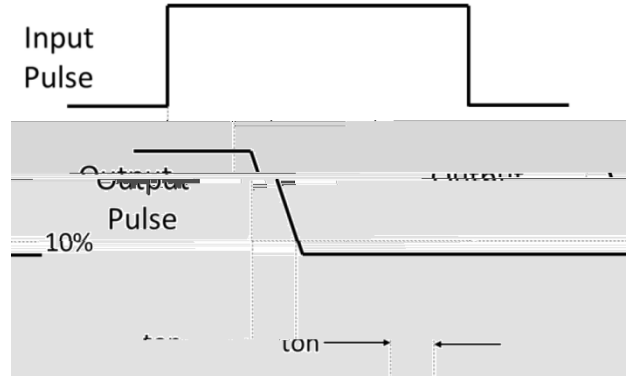


Fig 1 4:

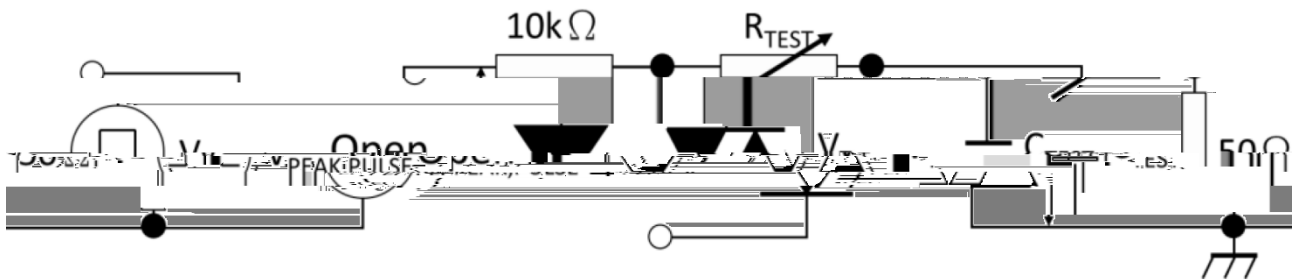
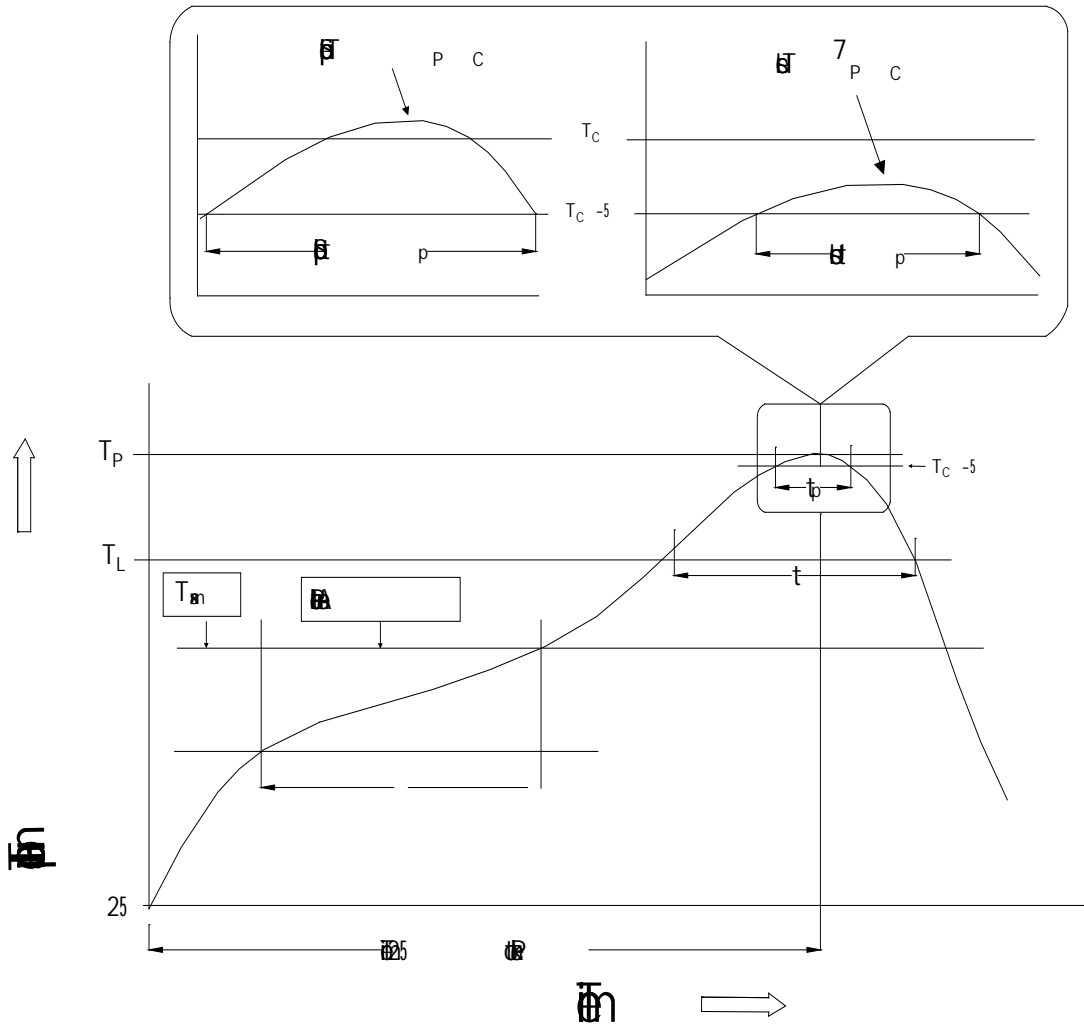


Fig 1 5:



REFLOW INFORMATION



04

Je