

P_{GM}	$(T_j=125^\circ C)$	P_{GM}	0.5	W
P_{GM}		P_{GM}	10	W
V_p	$(T_j=25^\circ C; D=0.5)$ (FIG.7)	V_p	3.5	V

ELECTRICAL CHARACTERISTICS $(T_j=25^\circ C)$

Symbol	Test Condition	Quadrant	Value		Unit
I_{GT}	$V_D=12V, L=33\mu H$	- -	MAX	25	A
V_{GT}		- -	MAX	1	V

V_{GD}

ORDERING INFORMATION

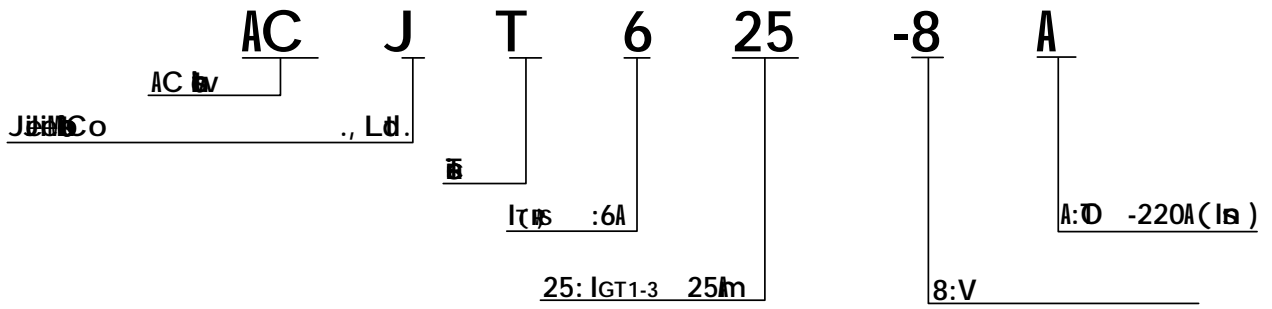


FIG.1: ~~Micrograph~~

~~Micrograph~~

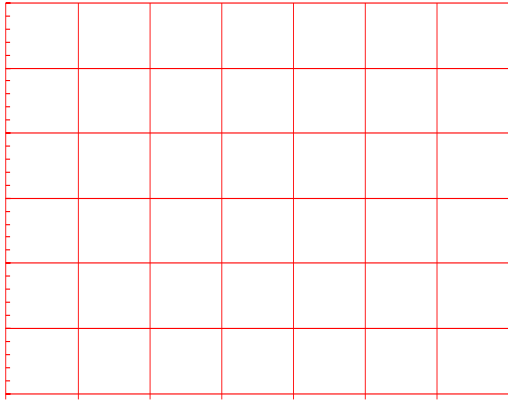


FIG.2: ~~Micrograph~~

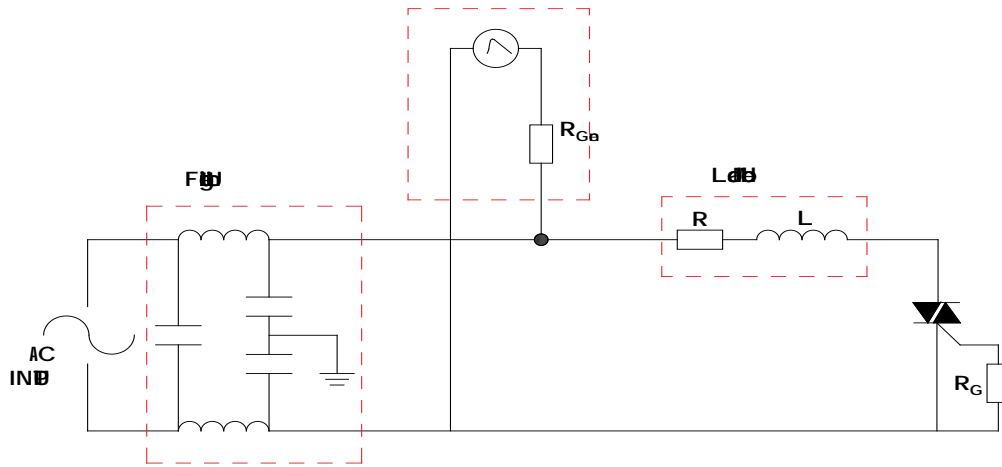
~~Micrograph~~

~~Micrograph~~

FIG.7

-61000-4-5

IEC61000-4-5
SgG



ORDERING INFORMATION

Order code	Voltage V_{DRM}/V_{RRM} (V)	IGT(mA)	Package	Base qty. (pcs)	Delivery mode
ACJT625-8A	800	25	TO-220A(Ins)	50	Tube

Document Revision History

De	Re	Co
Ap .14, 2023	A. 1.0	L#
03, 2025	A. 1.1	Re PACKAGE MECHANICAL DAT

PACKAGE MECHANICAL DATA

