



JST138C-600D 12A TRIAC

Rev.A.1.1

DESCRIPT ION:

Technical description text including part number and specifications.

MAIN FEAT RES

ABSOLUTE MAXIMUM RATINGS

Table with 4 columns: Parameter, Symbol, Value, Unit. Rows include parameters like Tg, Tj, Vrm, Vrrm, Im, Iavg, Iavg1, I2t, and di.

Table with 4 columns: Parameter, Symbol, Value, Unit. Row includes Pavg, 0, W.

Additional technical notes and specifications.



ELECTRICAL CHARACTERISTICS

Symbol	Test Condition	Quadrant	Value	Unit
$I_{G1}$	$V_{D1} = 0$	- -	5	mA
			0	
$V_{G1}$		A	1	V
$V_{G2}$	$V_{D2} = 0$ $R_{L2} = k$	A	0	V
$I_{L1}$	$I_{G1} = 2 I_{G2}$	- -	5	mA
			0	
$I_{H1}$	$I_{T1} = 0$		0	mA
$\Delta V_{G1}$	$V_{D1} = 0$ $nT_{j1} = 2$		0	V/μs
$\Delta V_{G2}$	$V_{D2} = 0$ $j \neq 0$		2	V/μs
$t_{D1}$	$I_{G1} = 2 I_{G2}$ $I_{A1} = 0$ $I_{R1} = 0$		3	μs
$t_{D2}$	$T_{j1} = 2$	TP	0	

STATIC ELECTRICAL CHARACTERISTICS

Symbol	Parameter	Value(MAX.)	Unit
$V_{M1}$	$I_{M1} = 5 \mu A$ $T_{j1} = 2$	1.6	V
$V_{D1}$	$T_{j1} = 2$	0	V
$R_{D1}$	$T_{j1} = 2$	4	m
$I_{M2}$	$V_{D2} = 0$ $V_{R2} = 0$	5	μA
$I_{M3}$	$T_{j1} = 2$	0	

**JST138C-600D**

FIG.1:   
a 

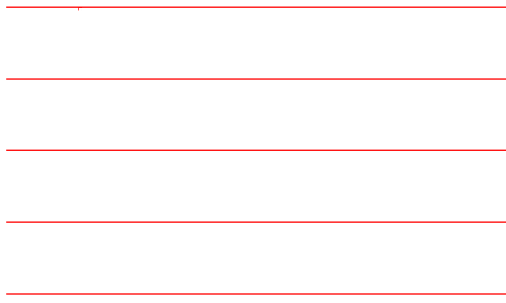



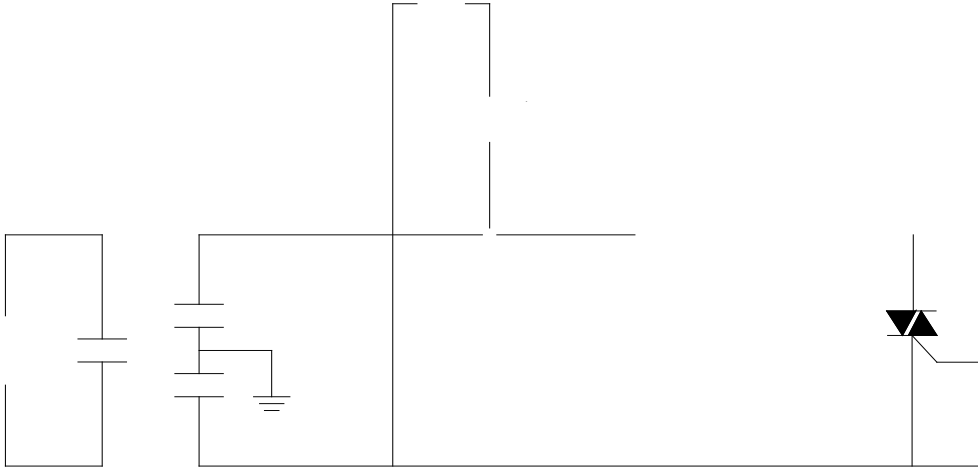


FIG.2:  -   
b 



**ORDERING INFORMATION**

**ION**

Order code	Voltage $V_{DRM}/V_{RRM}$ (V)	IGT(mA)		Package	Base qty. (pcs)	Delivery mode
		-	-			
JST138C-600D	600	5	10	TO-220C	50	Tube

